



Diary Dates for June 2015

| | | |
|---------|---------------------------|-----|
| 27 June | Table Sale | p 5 |
| 30 June | FHOBS Lunch Club (737814) | |

Diary Dates for July 2015

| | | |
|---------|---------------------------|------|
| 5 July | Open Gardens | p 27 |
| 9 July | Onehouse Table Tennis | p 25 |
| 12 July | Onehouse Ramblers | p 19 |
| 14 July | Coffee morning | p 9 |
| 17 July | Phone for bird seed order | p 26 |
| 19 July | Deanery Songs of Praise | p 2 |
| 21 July | Candlestick Club | p 11 |
| 23 July | Onehouse Table Tennis | p 25 |
| 28 June | FHOBS Lunch Club (737814) | |
| 30 July | Onehouse Table Tennis | p 25 |
| 30 July | Garden Club Summer Social | p 27 |

Diary Dates for August 2015

| | | |
|-----------|---------------------------|------|
| 1 August | Buxhall & Shelland Fete | p 8 |
| 4 August | Candlestick Club | p 11 |
| 11 August | Coffee morning | p 9 |
| 25 August | FHOBS Lunch Club (737814) | |
| 29 August | Produce Show | p 36 |

Diary Dates for September 2015

| | | |
|--------------|---------------------------|------|
| 10 September | Onehouse Table Tennis | p 25 |
| 10 September | Garden Club | p 28 |
| 12 September | Men's Breakfast | p 17 |
| 13 September | Garage Trail | p 11 |
| 17 September | Fashion Show & Shopping | p 13 |
| 24 September | Onehouse Table Tennis | p 25 |
| 29 September | FHOBS Lunch Club (737814) | |

Buxhall Broadcast



July and August 2015

Services for July 2015

Priest in Charge: The Revd Chris Childs, 135 Poplar Hill, Stowmarket IP14 2AY
01449 673280 or revcchilds@aol.com

Curate: The Revd Rachel Cornish, The Rectory, Woodlands Close, Onehouse IP14 3HL

5 July: The Fifth Sunday after Trinity, St Thomas

Habbakuk 2.1-4; Psalm 31.1-6; Ephesians 2. 19-end; John 20.24-29

| | | | |
|---------|----------------------|-------|-----------|
| 9.30 am | Service on The Green | Chris | Harleston |
|---------|----------------------|-------|-----------|

12 July: The Sixth Sunday after Trinity

Amos 7.7-15; Psalm 85.8-end; Ephesians 1.3-14; Mark 6.14-29

| | | | |
|---------|----------------|------------------|------------------|
| 9.30 am | Holy Communion | Sally Fogden | Harleston |
| 9.30 am | Matins | Derek | Buxhall |
| 9.30 am | Family Service | 'The Home Team' | Shelland |
| 6.30 pm | Holy Communion | Rachel / Barbara | Great Finborough |

19 July: The Seventh Sunday after Trinity

Jeremiah 23.1-6; Psalm 23; Ephesians 2.11-end; Mark 6.30-34, 53-end

| | | | |
|----------|-----------------|-----------------|------------------|
| 9.30 am | Matins | Chris | Shelland |
| 9.30 am | Morning Worship | Arlene | Buxhall |
| 11.00 am | Holy Communion | Arlene / Rachel | Onehouse |
| 11.00 am | Morning Worship | Nigel Brown | Great Finborough |

| | | |
|---------|-------|-------|
| 6.30 pm | Chris | Combs |
|---------|-------|-------|

Deanery Songs of Praise and welcome to the Revd Rachel Cornish

26 July: The Eighth Sunday after Trinity, St James

Jeremiah 45.1-5; Psalm 126; Acts 11.27-12.2; Matthew 20.20-28

| | | | |
|----------|----------------|---------------|------------------|
| 9.30 am | Sung Eucharist | Chris /Rachel | Buxhall |
| 9.30 am | Matins | | Harleston |
| 11.00 am | Holy Communion | Chris | Great Finborough |
| 11.00 am | Holy Communion | Arlene | Onehouse |

We meet for Evening Prayer:

4.30 pm on Thursdays at St Andrew's, Great Finborough

All welcome!

Whether you are a regular worshipper or a visitor to our churches this Sunday, you will find a warm welcome at any of our services

| |
|-------------------------------|
| August services on back cover |
|-------------------------------|

Services for August 2015

Priest in Charge: The Revd Chris Childs, 135 Poplar Hill, Stowmarket IP14 2AY
01449 673280 or revcchilds@aol.com

Curate: The Revd Rachel Cornish, The Rectory, Woodlands Close, Onehouse IP14 3HL

2 August: The Ninth Sunday after Trinity

Exodus 16.2-4, 9-15; Psalm 78.23-29; Ephesians 4.1-16; John 6.24-35

| | | | |
|---------|-------------------------|----------------|-----------|
| 9.30 am | Benefice Holy Communion | Chris | Harleston |
| 6.30 pm | Benefice Evensong | Chris / Rachel | Shelland |

9 August: The Tenth Sunday after Trinity

1 Kings 19.4-8; Psalm 34.1-8; Ephesians 4.25-5.2; John 6.35, 45-51

| | | | |
|----------|-------------------------|---------|------------------|
| 11.00 am | Benefice Holy Communion | Chris | Great Finborough |
| 6.30 pm | Benefice Evensong | Barbara | Buxhall |

16 August: The Eleventh Sunday after Trinity

Proverbs 9.1-6; Psalm 34.9-14; Ephesians 5.15-20; John 6.51-58

| | | | |
|----------|-------------------------|--------|------------------|
| 11.00 am | Benefice Holy Communion | Rachel | Onehouse |
| 6.30 pm | Benefice Evensong | Chris | Great Finborough |

23 August: The Twelfth Sunday after Trinity

Joshua 24.1-2a, 14-18; Psalm 34.15-end; Ephesians 6.10-20; John 6.56-69

| | | | |
|---------|-------------------------|----------------|-----------|
| 9.30 am | Benefice Sung Eucharist | Rachel / Chris | Buxhall |
| 6.30 pm | Benefice Evensong | Chris | Harleston |

30 August: The Thirteenth Sunday after Trinity

Deuteronomy 4.1-2, 6-9; Psalm 15; James 1.17-end; Mark 7.1-8, 14, 15, 21-23

| | | | |
|---------|-------------------------|--------|----------|
| 9.30 am | Benefice Holy Communion | Arlene | Shelland |
| 6.30 pm | Benefice Evensong | Chris | Onehouse |

6 September: The Fourteenth Sunday after Trinity, Blessed Virgin Mary

Isaiah 61.10-end; Galatians 4.4-7; Luke 1.46-55

| | | | |
|---------|--------------------------|---------------|----------|
| 9.30 am | Patronal Sung Eucharist, | Chris | Buxhall |
| 3.00 pm | Harvest Festival | Chris /Rachel | Shelland |

We meet for Evening Prayer:

4.30 pm on Thursdays at St Andrew's, Great Finborough

All welcome!

Whether you are a regular worshipper or a visitor to our churches this Sunday, you will find a warm welcome at any of our services

Church rotas

| | Service | Cleaning for service on | Flowers for service on | Coffee | Sidesman |
|---------|-------------------------|--|----------------------------|---------------|-------------------------|
| 5.7.15 | No service | Lisa Minoprio & Shireen Wright | Lisa Minoprio | - | - |
| 12.7.15 | Matins | Delia & James Golding | Delia Golding | Gill Ling | John & Lavinia Biles |
| 19.7.15 | Morning Worship | Delia & James Golding | Delia Golding | Angela Pead | Mike & Barbara Chatt |
| 26.6.15 | Sung Eucharist | Jill Reed, Tina Newell and Trudy Gibbs | Judith Hickman | Barbara Chatt | Ivy Friston & Gill Ling |
| 2.8.15 | No service | Jill Reed, Tina Newell and Trudy Gibbs | Judith Hickman | - | - |
| 9.8.15 | Evensong | Dan and Lucy Fisher | Lucy Fisher | - | John & Lavinia Biles |
| 16.8.15 | No service | Dan and Lucy Fisher | Lucy Fisher | - | - |
| 23.8.15 | Benefice Sung Eucharist | Ivy Friston & Anne Hicks | Ivy Friston and Anne Hicks | Jill & Lesley | Ivy Friston & Gill Ling |
| 30.8.15 | No service | Ivy Friston & Anne Hicks | Ivy Friston and Anne Hicks | - | - |
| 6.9.15 | Benefice Sung Eucharist | John & Lavinia Biles | Lavinia Biles | Denise & Ivy | David & Lesley Steed |

If you wish to swap with someone, please arrange it with them directly.

Not from the Rectory...

As I write this in the middle of June I am hoping that the weather will settle down into something more like the summers I remember as a child. Then the sun always seemed to shine and even though I spent these years in the east of Scotland we never seemed to be too bothered by the winds and rain we hear about now. Memories?

Does our memory shut out the unpleasant things in life?

This month already has been one of meeting people who are important in the life of the village and the church. People are the lifeblood of any organisation and one very happy evening was spent sharing a meal – known as a Safari Supper – in the company of people we have known for a long time as well as others who are more recent members of the community. It is amazing how we all gel together and nurture a feeling of community to build us up.

Another evening was spent with Michael Green. You may have seen through the magazine that Michael is a missionary with the Church Mission Society in Jordan and went there as a special needs nurse. His interaction with the locals in Jordan is amazing, particularly the Bedouin and is an example to many who would like to use their skills wherever needed in the world. Incidentally, it's not an easy life. From his kitchen window in Jordan he looks out over the Syrian hills - a little bit close for comfort!

And then there was the delight of meeting up with the Revd Canon Darlington Bendankeya who has come from our link diocese of Kagera in Tanzania. He exudes joy and happiness though his work is not easy. Financially and practically it is difficult – he even built his own house some years ago which he called the Rectory. His attitude make us reconsider our actions, particularly as a community, and just shows what we could do together rather than as individuals.

But of course we read of all those who do give so much with the granting of Honours in the Queen's Birthday Honours list. They don't think of themselves but give of their time and talents to make this world a better place.

I began by talking about our memories – mostly good – and I am sure those memories are made more poignant by the actions of people who crossed our paths whether we were young or older and we must never forget how they helped us to become the people we are.

May you have a pleasant summer with many memories to store up in your memory treasure chest.

Arlene

St Mary's Parish Church contacts

Priest-in-Charge

The Revd Chris Childs Combs Rectory, Stowmarket IP14 2AY 673280

Churchwarden:

| | | |
|----------------|------------------------|--------|
| Mr David Steed | Leffey Hall, Buxhall | 737991 |
| Mr David King | Peacock Ridge, Buxhall | 737405 |

Lay Elders:

| | | |
|-----------------|------------------------------------|--------|
| Mrs Jill Reed | Sorrels, Mill Road, Buxhall | 737814 |
| Mrs Angela Pead | Tiree, High Road, Great Finborough | 674754 |
| Mrs Gill Ling | 5 Stearn Drive, Onehouse | 613523 |
| Mr Tony Bugg | 108 Spencer Way, Stowmarket | 616865 |
| Mrs Irene Bugg | 108 Spencer Way, Stowmarket | 616865 |

All of the ministry team of this benefice are available for pastoral care - to offer a space to talk informally, to offer support and prayer.

Advertising

If you would like to place an advert in the Buxhall Broadcast, please contact Lesley Steed by e-mail at lesleyann.steed@btinternet.com or telephone 01449 737991. An electronic version of your advert is especially welcome as it will then be nice and crisp! However, I will be happy to help you publish any other format. Current rates are:

¼ page £6 / issue ½ page £8 / issue Full page £12 / issue

Deadline for September issue: 15th August 2015

Editor: Lesley Steed **Telephone:** 01449 737991

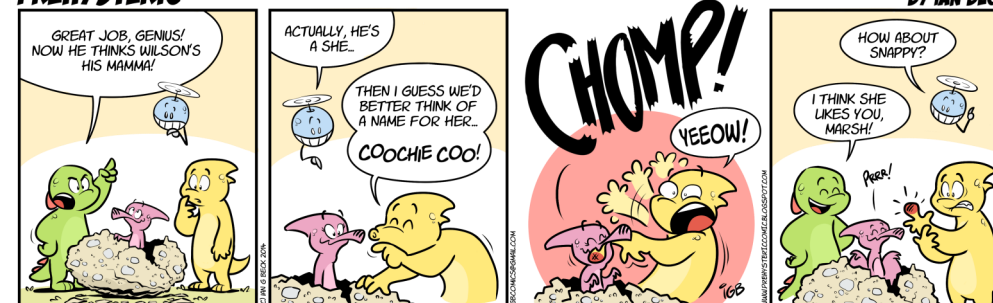
E-mail: lesleyann.steed@btinternet.com

Address: Leffey Hall, Brettenham Road, Buxhall IP14 3DX

Please note that articles and advertisements are individual contributions and do not necessarily represent the views of Buxhall Parochial Church Council or Buxhall Parish Council. The Editor's decision is final.

Buxhall Broadcast is published by St Mary's Parochial Church Council with generous support from Buxhall Parish Council. It is distributed free of charge to every household in the Parish.

PREHYSTERIC



Buxhall Fete – 1 August

Cakes – Cakes – and other goodies for the ever popular
CAKE STALL

We are calling you all to help us make this yet again a very special year – all donations of cakes, biscuits, jams etc will be much appreciated – if it helps we can collect your wares.

Delia 737210 and Lavinia 736297

Buxhall Village Hall

The main aim of the Village Hall is to improve the conditions of life for the local community and is an ideal venue for hosting most types of events. With newly decorated main hall, bar area and kitchen facilities It can be used for birthday parties, wedding receptions, business and club meetings, musical events, lectures, classes and for other forms of recreation and leisure time occupation. Whilst non-residents are most welcome the inhabitants of Buxhall do benefit from preferential rates. To book or obtain more information on hire rates and availability please contact Mim Proctor on 01449736598. More information on the hall is available at:

<http://buxhall.onesuffolk.net/>

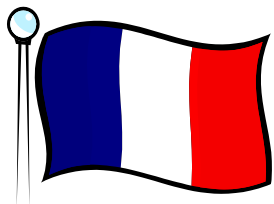
FRANCE

CARENTAN IN NORMANDY

Large open plan, fully furnished, two large bedroomed apartment with parking, large dining and living area.

Near sea and Marina, over-looking Market Square with shops, cafes and restaurants within walking distance.

Easy to travel to from UK, only 30 mins from CHERBOURG and 50 mins from CAEN ports.



10 Mins from DD Landing Beaches

30 Mins from Bayeux Tapestry

60 Mins from Mont Saint-Michel

Direct rail link to PARIS every 30 mins

Very reasonable rates, telephone PAULINE on 07979 593624

Need a babysitter?

Let me help you!

My name is Isy and I live in Buxhall. I am 15 years old and I have two younger sisters that I look after.

I am looking for some work. I can bring references, if you would like to meet me and have a chat.

Please call 01449 736980

Buxhall & District Community Council

The Community Council are running their annual Flower & Produce Show on Saturday 29 August. Show schedules are now available from the following Committee members:

Graham Mitchell-Rowlands, Val Lord, Valda Gant, Julie Hartley, Nicky Fisher, Mim and Keith Proctor, Jim Hubble and Betty Steed.

Also there will be some available in the church. Please support this little show, it's not quite Chelsea but the next best thing for a village in Suffolk!

Table-top Sale

Saturday 27 June
10.00am—3.00pm in the Hall.

£5 per table.

A chance to boost Village Hall funds and for you to relieve yourselves of some unwanted possessions.

Please help!

Just come to the hall on the day or book on 737814.



Buxhall Community Council

are holding a **tombola stall** at the Produce show on
Saturday 29 August 2015

3.00pm, Buxhall Village Hall

Donations of suitable prizes needed so if you have any unwanted gifts, chocolates, toiletries etc, we'd be more than happy to collect them.

Please contact **Julie** 737929 or **Val** 737113

to arrange delivery/collection

Thank you for your support!

SPANISH



Can you order your
"cerveza, vino y tapas?"



I CAN TEACH YOU!!

Phone **Andrea**
on **01449 736955**

STOWMARKET SKIP HIRE

Prompt and Reliable Service

Suppliers of 2, 4, 6, 8 yd Skips

1 Tonne Waste Bags

Hoggin, Topsoil and Hardcore

Plot 3a, Ernest Nunn Road,
Stowmarket Business Park,
Needham Road
STOWMARKET IP14 2ED

Phone: 07860 692733 or
01449 613824

LITTLE HANDS TODDLER GROUP

Telephone: 07708 362697
Registered Charity Number: 079987



TERM TIME FRIDAY MORNINGS

9.15 am - 11.00 am

For children aged 0 - 3 yrs -

£2 per child, £2.50 per family

Weekly changing themed activities

Play, Craft, and Laughter



Healthy snack for the children and a cuppa for the adults included

Sing a long and calming story circle time with NVQ qualified member of
our pre-school team...a chance to meet each other.



First Session Free - you will soon feel very welcome!

All children must be accompanied by a parent or carer.



Charisma Hair

Proprietor: Charis Ward, NXT Colour Educator for East Anglia

86a Forest Road, Onehouse, Stowmarket

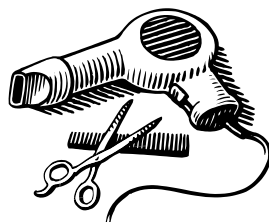
01449 677202

(closed Monday)

- Friendly and qualified staff
- Full range of styling and colouring techniques
- Manicures

Sample price list

- | | |
|-------------------------|---------|
| • Dry trim | £12—£15 |
| • Cut and blow-dry | £25—£30 |
| • Root colour | £45 |
| • Full head woven foils | £70—£80 |



Other colour and perm prices on request

We would like to invite you to join our friendly village pre-school

What can we offer?

Qualified, caring and experienced staff

Excellent facilities and equipment

Good OFSTED report including 5 areas of outstanding.

For children aged 2½ to 5

Funded places for eligible 2 and 3 year olds and all 4 year olds.

Opening hours

Monday to Thursday: 9:15 am to 3:00 pm

Fridays: 9:15 am to 12:30 pm


For further details, please contact

Delia Prior (pre-school leader) on

Mobile 07513 140072

SUPERFAST BROADBAND FOR RURAL COMMUNITIES.

prices from
£24.99
 per month



Register your interest at
superherobroadband.com

CHIMNEY SWEEP

ECO SWEEP
 CHIMNEY SERVICES

- NEW POWER SWEEPING METHOD USED FOR A MORE THOROUGH CHIMNEY CLEAN THAN BRUSHES.
- INDUSTRIAL HEPA FILTERED VACUUM.
- FULLY INSURED.
- INSURANCE RECOGNIZED CERTIFICATES ISSUED.
- SPOTLESS, RELIABLE AND FRIENDLY SERVICE.
- ALL CHIMNEYS, WOODBURNERS, AGA, BOILER FLUES SWEEP.
- GUILD OF MASTER SWEEPS CERTIFICATED MEMBER.




TEL. 01359 232335

Other news from the churches

I hope you will take the opportunity to join with friends in other parishes during the month of August when the Great Finborough parishes traditionally join together in larger congregations and especially for the much requested Evensongs when we hope the bells of Buxhall and long awaited Gt Finborough's will call us in.

We welcome the **Revd Rachel Cornish** as our new curate, living at Onehouse Rectory, and I know that you will all make her welcome as she begins a new life in these communities. Rachel will be writing in the magazines, but better still come and see her at some services...

This is almost the final call for anyone to be **confirmed** on 13 September at Stowmarket. So far five people have indicated they want to talk about it and you will be most welcome – confirmation is the acceptance of the vows made for you at your baptism or if baptised as an adult, the remaining part of the service. It is about becoming a Christian and playing a full part in the church.

Can I remind anyone who is interested in getting **married in church** to speak to me as soon as possible. It is unlikely that there will be a clash of bookings anywhere save Combs but we are conducting 19 this year and the number has nearly doubled. Eligibility has nothing to do with church attendance, it is a legal entitlement and the grounds are extremely wide. The cost is usually about £500. **Baptisms** are different, there is no fee and we are nearly swamped, so please make contact early.

It's very early to say it but I hope you will be able to support the churches and the donations they give from their **Harvest suppers/lunches**. Onehouse, Combs, Shelland and both Finboroughs organise them so why not try another parish as well?

As far as **younger members** of the churches are concerned, I am hopeful that in the autumn the successful pattern of Worship and Messy Church will be restarted at Onehouse where there are people prepared to assist in its organisation. A new Family Communion with children's involvement will also be starting at Combs on the third Sunday of each month led by the Revd Alison Lay. Shelland Church is also beginning a Family Service once again as there appears to be demand and enthusiasm. Please remember that wherever you live you will be welcome at any of the services. The SPLAT Club at Great Finborough Primary School is attracting about 15 children each Friday. It is an exciting mix of games, craft and teaching. Our own Trinity Church School in Combs completes its first very successful year.

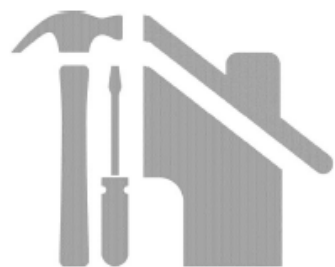
All good wishes, The Revd Chris Childs



MAKERS OF HIGH QUALITY
BESPOKE KITCHENS IN SUFFOLK

CALL 07845 938670
WWW.MURDOCHJOINERY.CO.UK

WhatChores Property Preservation



WhatChores

- ⇒ Brickwork
- ⇒ Flintwork repairs
- ⇒ Repointing chimneys
- ⇒ Patio, Garden walls
- ⇒ Outbuilding and Stable repairs
- ⇒ Garden Maintenance
- ⇒ Groundworks
- ⇒ Driveways repairs
- ⇒ General property maintenance

For a free no obligation quote

Please call 07818404029, 01359241435 evenings

Also find us on Facebook

Neighbourhood Watch news

Get connected to 'Police Connect'

Police Connect is a messaging service connecting you to the very latest policing news for your area via e-mail, text or phone.

There is no charge for this service - all messages you receive are free. You can register to receive information about the issues that most matter to you and be among the first to be alerted by police in the case of an emergency affecting your area.

You can choose to receive regular updates on crime and public appeals, safety advice and meetings and events. There is the option to receive information about a range of specific interest areas – such as 'rural' or 'rivers and coastal' – as well as updates for business owners and news from your Police and Crime Commissioner. The choice is yours.

While we urge all residents of the county to register, this service is of particular importance to members of Neighbourhood Watch schemes. To find out more – and to register – :

www.suffolk.police.uk/aboutus/ourservices/policeconnect

Driving licence changes

From 8 June 2015, the paper counterpart to the photocard driving licence will not be valid and will no longer be issued by DVLA. The counterpart was introduced to display driving licence details that could not be included on the photocard. These details include some vehicle categories you are entitled to drive and any endorsement/penalty points. All drivers should read the advice on the following website:

www.gov.uk/government/news/driving-licence-changes

Your Safer Neighbourhood Team(SNT)

To speak with an Officer from your SNT - telephone 101, or email your local SNT team – midsuffsouth.snt@suffolk.pnn.police.uk

Please remember to visit your local SNT's website on a regular basis at www.suffolk.police.uk/saferneighbourhood where you can find out more about the local policing priorities that have been set with your community input, and about the actions the teams are taking in your area.

Malcolm McKessar

Community Watch Liaison Officer (Mid-Suffolk Region)

Stowmarket Police Station, Violet Hill Road, Stowmarket, IP14 1NJ

01473 613888 (ext 3388); malcolm.mckessar@suffolk.pnn.police.uk

If you have any information about any crime, please contact your local Police by dialling 101, or Crimestoppers on 0800 555 111. For all Emergencies, dial 999.

A new way to give feedback on health and social care in Suffolk



Healthwatch Suffolk, which has the job to ensure that the voice of local people and communities is fed into the heart of NHS and care services, has launched a new tool to help people in Suffolk let health and care bosses know what's good and what's bad about health and social care in the county.

The Feedback Centre is accessible via a variety of devices including mobile phones, ordinary PCs and tablets, just by going to Healthwatch Suffolk's website - www.healthwatchsuffolk.co.uk. People can easily and anonymously rate the care that they received in a simple way from wherever they are.

It is important that everyone has the chance to be heard. People can share their views in different ways including comment postcards (by free-post), by telephone or directly with staff at community events across the county.

Recent research has shown that half of the public who considered complaining about NHS services did not. Many people were put off because they expected the process to be too bureaucratic and others believed it would make no difference. Healthwatch Suffolk believes that by helping patients to more easily express their views we can improve health and social care.

For more information please visit the Healthwatch Suffolk website (www.healthwatchsuffolk.co.uk), email info@healthwatchsuffolk.co.uk or call 01449 703949 to speak to a member of the team.

Garden Club continued...

The first meeting of the new Gardening year will be 10 September in the Pettward Hall at 7.30pm, when Barry Kaufman-Wright will relate stories of "Wildlife in the garden" from the point of view of a police animal officer.

Finally, if you are interested in joining the garden club or would like to join us for any event you will be very welcome. Membership is only £15 per household per year or £2.50 per meeting as a guest. For further information contact John Davey (telephone 674401 or email john@abbeyclassics.co.uk) or Judith Cameron (telephone 672978 or email judyandian@btinternet.com).

From The Registers



Harleston – St Augustine

Joan EVANS

Died 29 April 2015, aged 91

Cremation at West Suffolk Crematorium followed by service at St Augustine's Church 27 May 2015



British Red Cross Collection

Very many thanks to everyone who contributed to the collection for the Red Cross which took place during May. We managed to raise £217.56 which is once again an increase over last year's collection. Special thanks to Jill Reed, Glynis Reynolds, Ivy Friston, Valda Gant and Val Lord for their help with the fund raising.

Linda Hicks

St Andrew's Church, Great Finborough

Coffee mornings

at the Chestnut Horse

Great Finborough

Tuesday 14 July 2015 and

Tuesday 11 August 2015

from 9.30 am until 11.30 am

Our August coffee morning will include games for children including a treasure hunt

Everyone is welcome to come along!

LEEWAY

WINDOW CLEANING

PROFESSIONAL RELIABLE est 1999

DOMESTIC AND COMMERCIAL

COVERING SUFFOLK

FULLY INSURED—CALL NOW ON

01449 736664 ... 07834 998097

Hart Carpentry

*All Carpentry and Small
Building Work*

*New doors
Wood flooring*

*Property repair & renovation
1st & 2nd fix construction work*

*New Kitchens / Kitchen renovation
Bespoke wardrobes & storage units
Extensions (working with my reliable
trade contacts)*

*Qualified and experienced carpenter
in both renovation and new build*

Matthew Hart

Mobile - 07747467057

New landline number - 01284 756997

Email - hartcarpentry@ymail.com

Great Finborough and District Garden Club

June is usually a quiet month for the Garden Club with the weather providing perfect conditions for working in our own gardens, as a result of the winter rains and the mild temperatures everything is not only early but lush and healthy too.

This month's activity is concentrated on advancing the committee's preparations for the village Open Gardens on 5 July. This includes the President's Lawn BBQ on the previous evening given by the Club and organized by the committee to say a heartfelt thank you to those who offer their gardens to us to support our chosen charity. The beneficiary this year is to be St Andrew's Church.

The church and churchyard, together with private gardens, and two refreshment stops, will be open. There will be a stall selling garden related items, our own Heidi Prior selling her home grown cacti and Audrey the vintage ice-cream van selling Alder Tree Ice creams. A small display of classic cars and motorcycles will also be present. There will also be a snowman hunt for the children.

Tickets are priced £4 per adult with children free and will be available from the marquee on the green in front of the village shop supported by plant and tombola stalls.

We would be very grateful if anyone could help out by contributing plants for the plant stall and cakes/scones for the tea venues. Your contributions are most gratefully received and are much appreciated. The marquee on the green will be manned from 11am to receive plant contributions and cakes can be delivered to 8 High Road or Park Cottage any time. If you would like your contributions collected please contact any member of the committee.

Of course the major social occasion of the gardening year approaches with a rush: 30 July is the date for the annual club BBQ and summer social, on this occasion we will also use the raffle to raise money for EACH. Again we will be celebrating another successful gardening Club year at The Little House courtesy of Pat & Peter Turner. Details to follow.

As before the club will supply the cooks, meat, BBQ Sauces and bread and the ticket price remains the same at £2.50 per head. Members should still bring along a salad or dessert to share and their drink of choice. Details will be on the notice/ attendance slip and with luck the weather will be kind and the evening will reflect the sociable spirit of the Club.

Cont overleaf....

August Bird Seed Order

Our next seed order will be placed in August. There is no parish magazine in August so if you would like to order seed please ring me (674401) or email me (john@abbeyclassics.co.uk) after 17 July and I will be able to provide price details etc.

John Davey

Nearly New Stall

The Nearly New stall will be at the Buxhall & Shelland Church Fete on Saturday 1 August 2015!

If you are sorting out your Spring wardrobe, have gone down a size or up a size and don't wish to be reminded then please consider donating to the Nearly New stall. Donations of clothes and accessories, for example handbags, scarves, belts, in good condition are very much appreciated.

The Nearly New stall is a great opportunity to recycle good quality unwanted items and help to reduce wastage.

Donations can be brought to Fasbourn Hall, Valley Lane, Buxhall from the beginning of July or if you would like items to be picked up then please call me on 01449 737867.

Thank you for your help.

Nicky Fisher

News from your District Councillor - John Matthissen

Just a brief reminder to everyone who has a hedge bordering a road, pavement or footpath: please trim these back to ensure people can walk, cycle and drive safely. For farmers and land-owners, I understand that you can cut hedges back one metre from the road at any time of the year, while still complying with the Wildlife and Countryside Act 1981.

To get in touch...

Call 01449 771742

Or email – councillor@matthissen.net

Or write to me at 3 Wash Lane Corner, Great Finborough, IP14 3BJ

Buxhall and Great Finborough Over 60s

Candlestick Club

At the time of writing we are soon to be going on our second outing of the season. Our first trip out this year was Katie's mystery outing to the Royal Horticultural Society Gardens at Hyde Hall. This was about 10 miles south of Chelmsford and a very enjoyable day was had by all. Our next outing is to Waldringfield, near Woodbridge with a trip on the Deben and then a meal in the Maybush Public House. On 21 July we are off to Snape Maltings and stopping at Debenham on the way back for a delicious WI tea. The outing in August is to Ely and Ely Cathedral. This is on Tuesday 4 August, usual leaving times. If any members—or non-members would like to go on these outings, please let Keith (736598) or Katie (736430) know in good time.

New members are always welcome!

Candlestick Club Diary

| | |
|-------------|--|
| 21 July | Snape Maltings and meal. Coach £8 plus WI tea at Debenham |
| 4 August | Ely and Ely Cathedral. Coach £8. Ely Cathedral ? |
| 8 September | Day trip to Felixstowe. Fish & chips at the Shack. Coach £7. |
| 1 October | Bring, Buy and Bingo. Buxhall Village Hall, 2.00pm |
| 5 November | Speaker: TBA. Buxhall Village Hall, 2.00pm |
| 3 December | Christmas lunch, place and time to be announced |

All times for outings:

Great Finborough 9.45am; Buxhall 9.50am; Harleston 10.00am

Great Finborough and Buxhall Under 5's Garage Trail

Sunday 13 September 2015

To include houses in Great Finborough and Buxhall

£6 per garage

To book your place please call 07513140072

Registered Charity Number: 1079987

KING'S Property & Garden Care

Phone 01449 737495 mob 07971 465372

Email: adrian@kingspropertycare.co.uk



Grass & Hedge cutting

General care and maintenance



Window Cleaning

Pure water treatment, pole and reach system

Interior/Exterior decorating

General repair work



TOMLINSON GROUND CARE

Horticultural & Garden Machinery Suppliers

Sales • Service • Parts • Repairs

1 Brettenham Road
Buxhall, Stowmarket, IP14 3DL
www.tomlinsongroundcare.co.uk

01449 736060

Opening Times

Mon– Fri 8.00 am to 5.00 pm
Saturday 8.00 am to 12.30 pm

Visit our **LARGE SHOWROOMS**
and **TOY STORE**



This advert is too small to be able to show you all we have to offer, please visit our website or come and have a cup of tea/coffee and discuss your requirements. Main Al-Ko and John Deere Dealers, over **15** ride-on and **25** walk-behind mowers to **Try before You Buy**



Handcrafted in the Heart of Suffolk

Alongside the Suffolk Open Studios, we are raising awareness of the many talented craftspeople, based here in the Heart of Suffolk. We want to promote their skills and crafts to local people as well as the tourists who come to visit us. We stock:

Watkins Soaps botanical, picture, aromatherapy soaps and balms. A small family business at Borley Green, Woolpit.

Shirley Casey Uniquely handcrafted cushions, jewellery, pincushions, bookmarks and brooches. Shirley lives near Wattisfield.

Val Stobbart Traditional Suffolk corn dollies, horseshoe, scarecrow, lovers' knot and glory braid.

Irene Hart and **Greta Hansen** Cards and prints of local scenes and wildlife. Irene lives at Ringshall and Greta in Stowmarket.

Carter's Teapots Collectable, hand painted, traditionally made teapots. Recently moved from Debenham to Stonham Barns.

J Moseley-Williams Traditional Willow baskets from Pakenham.

We always try to stock locally made items, and get regular compliments on our range of gifts, cards and souvenirs. We are continuously looking for high quality and original new makers, and will do our best to find a suitable area to display goods to their best.

Table Tennis at Onehouse Church Room

Thursdays, 7.30-9.30pm

9, 23 and 30 July • No sessions in August
Play resumes on 10 and 24 September

From time to time I meet people, who say, 'I might come and have a game sometime', or 'I think I'll give Table Tennis a try,' but we never see them! If that's you, we look forward to welcoming you on a Thursday evening... sometime

£2 / session including refreshments

Derek Ames (Tel. 613328)



Preferred bidder announced for Suffolk's community health services



The preferred bidder has been announced to deliver NHS community health services for the population of Suffolk. West Suffolk NHS Foundation Trust, Ipswich Hospital NHS Trust and Norfolk Community Health and Care NHS Trust have worked together on this. The contract will be held by West Suffolk Hospital. Patients will continue to receive the same safe, high quality services, by the same staff in the same locations.

Community health services are currently delivered by Serco, as part of a three-year contract, which will end as planned on 30 September 2015. The new provider will take over on 1 October 2015. The providers will deliver a range of adult community services, specialist children's services and community hospitals. It will work across the whole of the county, with the exception of the Waveney area, serving in excess of 600,000 people.

The contract has been awarded by NHS Ipswich and East Suffolk and NHS West Suffolk clinical commissioning groups, the local GP-led healthcare commissioners. Julian Herbert, accountable officer, NHS Ipswich and East Suffolk and NHS West Suffolk clinical commissioning groups said: "Over the coming months we will be working with the current provider and the new providers to ensure a smooth and seamless transfer of services. We want patients to continue to receive good quality community healthcare services. I would like to offer my thanks to the hard working staff at Suffolk Community Healthcare who do a marvellous job in making local healthcare services the best they can be."

Professor Dr Stephen Dunn, chief executive at West Suffolk NHS Foundation Trust said: "The announcement of preferred bidder supports our existing work, long term plan and those of our partners, to deliver the highest quality health service through integrated working. In practice this means patients will benefit from a partnership of local NHS trusts with experience in delivering award-winning care."

"By providing a more joined up service we will be able to break down the organisational barriers that can get in the way of great patient care. Together we will make the most of opportunities for community services, primary care, hospitals and social care to work together to reduce pressure across the system and provide the right care, in the right place at the right time."



St Andrew's Church, Great Finborough
are delighted to announce that we will be having
an evening of shopping and a
fashion show by our local company Style@Stow
on Thursday 17 September 2015 from 7.30 pm
at a cost of £7.50 which will include a drink, nibbles
and lucky number prize at Pettiward Hall,
Great Finborough.

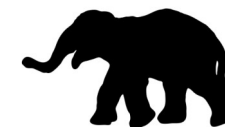
Although there is limited parking outside the Hall, there is a car park in the village opposite Chaplin's papershop.

Please contact Irene Bugg for tickets on 01449 616865,
07777 670483 or email irene.bugg@btinternet.com

Fete

Calling all gardeners, jam and chutney makers and other 'manufacturers': please bring any fruit, vegetables and other edibles to the GROCERY STALL. They will be most welcome and help to boost the Fete funds.

Many thanks,
Jill (737814)



John's elephant will also be present, having trumpeted his way to Copinger Hall. He desperately needs a name!



The Buxhall Crown

FREEHOUSE • RESTAURANT

Here at the Buxhall Crown we pride ourselves on only using the freshest ingredients possible for our menu, our deliveries are daily and all our food is cooked for you when you order. This ensures you get your food just how you want it. Every thing possible is made on the premises from Craig's delicious sticky toffee ice cream to our apple-smoked pork belly.

On Sundays we also offer a roast rump of mature British beef along with our usual menu. This proves to be very popular so be sure to reserve the beef when you book your table.

As usual a warm welcome is guaranteed to eaters, drinkers and dogs.

To avoid disappointment please call ahead to book a table on 01449 736521.

See our website for more information and for our daily menu:

www.thebuxhallcrown.co.uk e-mail: mail@thebuxhallcrown.co.uk



Andrew Bingham
INDEPENDENT FUNERAL SERVICE

Stowmarkets Independent Family Funeral Service

24 Hour Personal Service • Private Chapel of Rest • FREE Parking



Telephone: 01449 771666

www.andrewbingham.co.uk



The Nutshell · Milton Road South · Stowmarket · IP14 1EZ



Flower Festival

Thank you to all who came to the Sensational! Flower Festival and Preview Evening over the weekend of 12—14 June, those who arranged the flowers so wonderfully, the fantastic tea tent people and all those who made cakes and scones. As you know, visitors are invited to choose their favourite arrangement and this year Sue Acheson won the trophy with: **Afternoon tea in the garden**, a really pretty display of mini arrangements in a teapot and cups and little flower cupcakes! In the programme Sue wrote: "What better way to spend a summer's afternoon than over a cup of tea and a chat with friends in the garden. In this arrangement I have tried to capture all of the five senses—the sight of the garden in bloom, the smell of freshly brewed tea, the taste of homemade cakes, the sound of friends chatting and the warmth of the summer sun. Where possible I have tried to use English country garden flowers and foliage."



The Flower Festival Committee

Classic & Sports Cars at Buxhall & Shelland Fete

Saturday 1st August 2015 at 2.00pm

If you are the proud owner of a Classic or Sports Car we invite you along to Display your Car at Buxhall & Shelland Fete. You can also join in with the Car Parade through the grounds of Copinger Hall.

Please contact Damian Nunn with your vehicle make and your contact details to reserve your place.

Tel: 07753 815678 or email: damian.nunn@me.com



Combs Ford Surgery

Dr Alison Jones and Dr Timothy Watson

The Practice is currently advertising for replacement GPs as Dr Jones and Dr Watson will be leaving us this summer. You will be aware from national news articles that there is a national shortage of GPs and we are concerned therefore that the recruitment of new GPs may take some time. In the meantime Dr Muir and Dr Ravikumar have every intention of continuing to offer GP services at Combs Ford Surgery and have the full support of all the staff. We are looking at all possibilities to manage the current workload whilst maintaining the list size of 10,100 patients.

As a result we have taken the decision, together with NHS England, to close our patient list for new registrations from 18 May for 12 months. This is to enable us to be continue providing a safe and responsive service to our existing patients.

However we are pleased to announce that we have appointed two excellent clinicians to support the GPs and existing staff. Both live locally and may be known to patients already.

Rachel Clarke, Senior Prescribing Nurse Practitioner, will lead this new team which will include Andrew, Emergency Care Practitioner, and Denise, Prescribing Nurse Practitioner, together with Michelle, Minor Illness Nurse. The receptionists will continue to guide you to the most appropriate clinician for your condition.

The most important change will be that of named GP. In the past all patients were registered with a GP and were encouraged to see only that GP. From this summer although patients will have a named GP on their records, they can see any of the clinicians available, as appropriate to their need. It is important that the Doctors' appointments are used for the most complex and chronic conditions.

If you would like to know more details of how you can help support your local GP Practice, please pick up a newsletter from reception or go to our website www.combsfordsurgery.org.uk



Buxhall & Shelland Fête

Copinger Hall, Buxhall

Saturday 1st August

2:00-5:30pm

Returning by popular request ...

The Lowestoft Dog Agility Display Team

NEW THIS YEAR

Children's Carousel, Steam Traction Engine and Ride-on Mini Train

PLUS

All the fun of the Fête including classic cars, tombola, refreshments, games, stalls & sideshows for all the family

DON'T MISS IT!

Free Admission

LAND ARMY DESIGNS

Garden design and build

Call Jane Hamblin

01359 231344

www.landarmydesigns.co.uk

For an instant garden try “Bed in a Box”

www.bedinabox.net

RATTLESDEN & DISTRICT VILLAGE SHOP & POST OFFICE

NOTICE IS HEREBY GIVEN OF OUR AGM to be held at Rattlesden Village Hall on Wednesday, 17 June 7.30pm.

Please come and join us to hear how your shop is run, and help us plan for the future. Wine and light refreshments will be served, and there will be an informal discussion after the meeting where we welcome an exchange of ideas.

We need to find more Community-minded volunteers to serve in the shop either for a couple of hours each week, or on a relief basis, or to help with stocking the shop. If anyone can spare a couple of hours occasionally, please contact Camilla Keeling 01449 737118.

Don't forget to checkout our range of local produce, or pop in if you've run out of the essentials like bread, milk or local free-range eggs. Fresh fish on Fridays at 2.45pm.

Post Office services include cash/foreign currency/home-shopping returns/dry-cleaning/shoe repairs.

Shop opens 9am—5pm daily, 9am—1pm Saturdays (01449 736199)

P.O. 9am – 1pm daily, 9am – 12.30pm Saturdays (01449 736197)

Purr and Borley families

My wife, Lesley, and I have just returned from another visit to your lovely church as part of our investigations into Lesley's family tree. We recently discovered that there are a number of her family buried in the local church graveyards at Onehouse and Great Finborough which have helped us considerably in tracing her tree. The family is named PURR and there are two graves at Onehouse, of her great grandfather and mother, and her great, great grandfather, mother and also her great, great uncle (named BORLEY) and we also located five other family graves in the St Andrew's, Great Finborough churchyard. We believe there is also a possibility that there may be PURR family graves at Buxhall but we have so far been unable to trace details of the locations of these.

We are writing to ask if you would be so kind as to include a request in your Parish Magazine for anyone who still has, or has in their family, the name PURR or BORLEY (who married into the Purr family) as we have discovered that the family connections with Onehouse, Finborough, Buxhall, Combs Ford and other surrounding villages go back for 4-500 years. We are also aware that one of her relatives with the PURR surname was apparently responsible for the church clock at St Mary's, Buxhall and was also the village Blacksmith whose forge was located in what was the Old Post Office in Buxhall and that the family grocery business (Purr's Stores) was also located in Buxhall with shops in Combs Ford, Needham Market and Ipswich at varying times.

Lesley's father, now deceased, had recalled his childhood walks, twice on Sundays, across the fields from Buxhall to Onehouse Church and we were able to take him to see the family graves before he passed away.

It would be wonderful if there were still PURR relatives in the area with whom we could make contact and we would be very grateful if you could consider making an appeal on our behalf in your magazine.

Many thanks in anticipation,

Our very best wishes,

Alan and Lesley Poole (Tel: 07717 317914 or 01582 425123)

Christian Aid Week: 10-16 May 2015

Thank you to those in Buxhall who supported the St Mary's Coffee Morning, which raised £65. This, together with the door-to-door collection in Onehouse of £492.94, gave an excellent total of £557.94.

Derek Ames

Suffolk Police Community Safety Unit

Cashpoint safety advice

Members of the public are reminded to be vigilant if they notice any suspicious activity inside banks, at ATMs or card payment devices and should alert staff and police as soon as possible. When using your cards:

- Be aware of who is around you and make sure people stay a good distance away from you.
- Don't let anyone distract you while you are using the cash machine or making a card payment. Cancel the transaction if you are worried.
- Use your hand, purse, wallet or other object to cover the keypad when entering your PIN.
- Store your money and cards away quickly.
- Check your statements regularly to ensure that there is no fraudulent usage.
- It is always good practise to keep your purse or wallet out of sight in a zipped bag, preferably across your body. Always check your bag immediately if someone deliberately bumps into you.

If you have details about any crimes, please contact your local Police Station, or call Crimestoppers on 0800 555 111.

East Anglian Air Ambulances

Thank you to all those who have handed in stamps, ink cartridges, mobile phones and coins over recent weeks. A good amount of stamps, mobile phones and coins will be dropped in at the Air Ambulance office next time we go to Ipswich. The procedure for ink cartridges has recently changed. A firm collects from the Parish Church in Stowmarket, once there are sufficient cartridges. We now send the cartridges collected in Onehouse to Stowmarket Church. The firm will re-use certain makes of ink cartridge and pay the Air Ambulance accordingly. Other makes of cartridge will be passed to other firms that recycle cartridges.

Derek Ames

Buxhall & District Community Council

Produce Show

The Produce Show will be held in Buxhall Village Hall on Saturday 29 August. There are some alterations to the schedule.

Topics for **photography (ordinary or digital)** will be:

- Zoo animal(s)
- Countryside scene
- A sporting event
- Black & white (any subject)

Floral art will be:

- An exhibit depicting a film from 2015

Children's classes:

- Any item of craft using recycled packaging
- A sock puppet

The cookery section will include:

- A round of shortbread
- A chocolate and banana cake—recipe given
- A lemon drizzle cake (men only)

The family class:

- a collage of fruit or vegetables to make a picture.

We hope to have your support again, either as competitor or spectator.

Thank you, Betty Steed

Men's Breakfast

In June the Revd Chris Childs gave us an insight into what he does as a Vicar. Many of the men who attended said afterwards they were surprised at the amount of admin and finance Chris has to do. So the job is not just about taking services, doing some visiting and drinking lots of tea!

Men's Breakfasts in the future: Saturday 12 September and Saturday 14 November

Further details in the September edition of the Broadcast



NEVES SOFT FURNISHING

Offering a wide range of Soft Furnishings

Services include made to measure
Curtains with a range of headings,
Roman Blinds, Cushions & Alterations

For consultation and advice please contact:
Sophia on 07850 690491

Coming soon - Soft Furnishing & Dress Making
Tuition

For further information please contact:
Amanda on 07947 323028

We are happy to source or use customer's own fabric.

Swing into Summer

Make this your year to flourish with one of the UK's leading weight loss programmes — Cambridge Weight Plan. Your Cambridge Consultant will give you a gentle push, based on their personal experience of losing weight with Cambridge.

Your Independent Cambridge Consultant:

Val Lord

Contact me for more information

Tel: 01449 737113

Mob: 07519 177645

E-mail: val.lord@tiscali.co.uk

www.facebook.com/val.lord/cwp

Cambridge
Weight Plan
Real people, real support, real results.



Katy before



Katy after

Buxhall and Shelland Fête – Tea Tent



Just a reminder that we would love you to bake us a cake for the **Tea Tent at the Buxhall & Shelland Fête on 1 August**. Large & small cakes – iced or not – are welcome, as are biscuits and savouries.



We depend on everyone's hard work and generous contributions to make the Tea Tent a success, so please do support us again this year!

Thank you all so much!

Chris Hart-Davies (737163)

Michael Green

It was good to have Michael with us during the last week of May. He was able to attend various events, including the Deanery Pilgrimage from Little Finborough to Haughley. He spoke at a number of meetings and church services. On the final Sunday evening, Michael showed slides and spoke about his hospital job and life in Jordan. One photo showed the scene from Michael's kitchen window, a line of trees marking the border with Syria nine miles away and he pointed out that the fighting was not too far beyond that.

Please remember Michael and the job he does in the coming weeks.

Derek Ames

Onehouse Ramblers

Sunday 12 July

Meet in the Church Room car park at 2.30pm and drive to Felixstowe, for a gentle amble around Trimley Marshes.

We might get a free cuppa with Ken & Rita!

Please let Derek know if you are coming (Tel. 613328), so transport can be arranged.

Derek Ames (613328)

